



BR1000 BEACHER RAILWAY INSTRUCTIONS

REIMANN & GEORGER CORPORATION
MARINE PRODUCTS
P/N 6112032

BUFFALO, NY
7/06/09

TABLE OF CONTENTS

CHAPTER	TITLE	PAGE
1	SAFETY	1
1.1	Introduction	1
1.2	Safety Definitions	1
1.3	Equipment Safety Labels	1
1.4	Equipment and Personnel Safety	1
1.5	Installation Safety	1
1.6	Operating Safety	2
1.6.1	General	2
1.6.2	Safety When Raising the Watercraft	2
1.6.3	Safety When Lowering the Watercraft	2
1.7	Maintenance and Storage Safety	3
2	SPECIFICATIONS	4
2.1	Technical Data	4
2.2	Nameplate and Serial Number Tag	4
2.3	Optional Equipment	4
3	INSTALLATION AND SETUP	5
3.1	Pre-Installation Checks	5
3.2	Track Assembly	5
3.3	Roller Bracket assembly	6
3.4	Assembly of Rollers to Track	6
3.5	Winch Support Assembly	7
3.6	Final Assembly Checklist	10
4	OPERATION	11
4.1	Before Operating the Beacher	11
4.2	Raising and Lowering the Watercraft	11
5	INSPECTION AND MAINTENANCE	12
5.1	General Maintenance Rules	12
5.2	Wire Rope Inspection Procedure	12
5.3	Annual Inspection	13
5.4	Annual Winch Maintenance	13
5.5	Storage Procedure	13
6	TROUBLESHOOTING	14
7	PARTS LISTS	15
7.1	BR1000 Railway System	15
7.2	BR1000 Roller Bracket Assembly	15

LIST OF FIGURES

FIGURE	DESCRIPTION	PAGE
2-1	Typical Product Nameplate	4
3-1	Track Assembly	6
3-2	Roller Support Bracket Assembly	7
3-3	Winch Support Assembly	8
3-4	Complete BR1000 Assembly	9
5-1	Wire Rope Components	13

1 SAFETY

1.1 INTRODUCTION

Your Reimann & Georger Corporation Marine Products Aluminum BR1000 Beacher Railway has been engineered to provide lifting performance, long term economics and safety advantages that no other type can match. However, even a well-designed and well-built lift can malfunction or become hazardous in the hands of an inexperienced and/or untrained user. Therefore, read this manual and related equipment manuals thoroughly before operating your lift to provide maximum safety for all operating personnel, and to get the maximum benefit from your equipment.



WARNING:

DO NOT OPERATE THIS BEACHER WITHOUT STUDYING THIS ENTIRE MANUAL. FAILURE TO DO THIS CAN LEAD TO EQUIPMENT MISUSE WITH RESULTING DAMAGE AND/OR SERIOUS PERSONAL INJURY. CONTACT YOUR RGC® MARINE DEALER IF YOU HAVE ANY QUESTIONS.

1.2 SAFETY DEFINITIONS

A safety message alerts you to potential hazards that could hurt you or others or cause property damage. The safety messages or signal words for product safety signs are **DANGER**, **WARNING**, and **CAUTION**. Each safety message is preceded by a safety alert symbol and is defined as follows:

DANGER: Indicates an imminently hazardous situation which, if not avoided, **will** cause death or serious injury. This safety message is limited to the most extreme situations.

WARNING: Indicates potentially hazardous situation which, if not avoided, **could** result in death or serious injury.

CAUTION: Indicates a potentially hazardous situation which, if not avoided, **may** result in minor or moderate injury. It may also be used to alert against unsafe practices and property-damage-only accidents.

1.3 EQUIPMENT SAFETY LABELS

These labels warn you of potential hazards which could cause injury. Read them carefully. If a label comes off or becomes illegible, contact a Reimann & Georger Corporation dealer for a free replacement.

1.4 EQUIPMENT AND PERSONNEL SAFETY

1. Do not use the beacher if it shows any signs of damage.
2. Do not exceed the rated maximum lifting capacity of this equipment.
3. Do not allow anyone to swim or play near or on the beacher at any time.

1.5 INSTALLATION SAFETY

1. Ensure that all bolts and nuts are fastened securely prior to operation.
2. Do not weld or otherwise modify the beacher. Such alterations may weaken the structural integrity of the beacher and void the warranty.

1.6 OPERATING SAFETY

1.6.1 General



WARNING:

NEVER USE THIS EQUIPMENT BEYOND ITS RATED CAPACITY OF 1000 LBS. THIS CAN DAMAGE THE BEACHER AND/OR WATERCRAFT WITH RESULTING SERIOUS PERSONAL INJURY.

1. Before allowing anyone to operate the beacher, be certain they fully understand the proper operating procedure.
2. Completely remove any user or dealer installed locking devices before operating the lift.



CAUTION:

DO NOT TRY RETRIEVING OR LAUNCHING YOUR WATERCRAFT IN ROUGH WATER CONDITIONS. THIS CAN DAMAGE YOUR WATERCRAFT AND/OR THE BEACHER.

3. Keep people and pets clear during operation of the beacher.
4. Keep fingers and clothing clear of all moving parts.
5. Check the beacher periodically for frayed straps or wire rope, and/or binding rollers.



WARNING:

WEAR HEAVY LEATHER GLOVES WHEN HANDLING WIRE ROPE. INSUFFICIENT HAND PROTECTION WHEN HANDLING WIRE ROPE CAN CAUSE SERIOUS PERSONAL INJURY.

6. Do not attempt to make any adjustments on the beacher while it is being operated.
7. Contact your dealer if the winch mechanism fails to perform as described in the Operation chapter of this manual.



CAUTION:

NEVER TAMPER WITH THE WINCH MECHANISM. THIS CAN CAUSE EQUIPMENT DAMAGE THAT WILL INVALIDATE YOUR WARRANTY.

8. Do not operate the beacher under the influence of drugs, alcohol, or medication.

1.6.2 Safety When Raising the Watercraft

The brake pawl must click, indicating that the brake is operative. This will give you controlled motion of your watercraft up the beacher. Ensure that your watercraft is centered on the beacher, and the winch strap or wire rope is securely attached to your watercraft.

1.6.3 Safety When Lowering the Watercraft

1. Maintain a firm grip on the winch handle. Release the winch pawl, and slowly crank the winch handle to pay out the winch strap or cable. Do not allow the strap or cable to slacken, this will cause uncontrolled lowering of your watercraft.



WARNING:

EXERCISE CAUTION WHEN LAUNCHING YOUR WATERCRAFT. NEVER TRY TO STOP A FREEWHEELING WINCH, AS PERSONAL INJURY CAN OCCUR.

1.7 MAINTENANCE AND STORAGE SAFETY

1. At least once a year, the beacher must be thoroughly inspected as described in the Maintenance chapter of this manual.



WARNING:

THE WINCH MAINTENANCE SCHEDULE MUST BE FOLLOWED TO AVOID POSSIBLE EQUIPMENT FAILURE OR PERSONAL INJURY. SEE THE SUPPLIED WINCH BROCHURE FOR MAINTENANCE INFORMATION.

2. Immediately replace any components found to be defective.

2 SPECIFICATIONS

2.1 TECHNICAL DATA

Capacity	1000 lbs.
Standard Length	12'
Extension Section Length	8'
Maximum Length	28'
Track width	17 3/8"
Minimum Roller Width (Center to Center)	12 1/2"
Maximum Roller Width (Center to Center)	20"
Shipping Weight	70 Lbs.

2.2 NAMEPLATE AND SERIAL NUMBER TAG

It is important to identify your beacher completely and accurately whenever ordering spare parts or requesting assistance in service. The lift has a product nameplate located on the vertical leg. The label shows the model and serial numbers and capacity rating. The beacher label should appear as the sample nameplate shown in Figure 2-1. Record the model and serial numbers, and capacity rating for future reference.

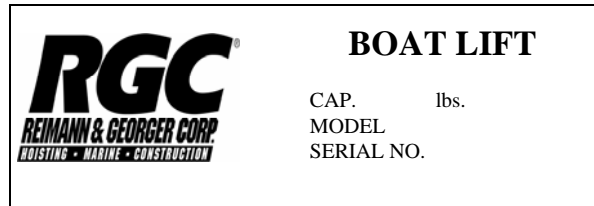


Figure 2-1.
Typical Lift Product Nameplate

MODEL **BR1000** _____

SERIAL NUMBER _____

CAPACITY RATING **1000 LBS.** _____

2.3 OPTIONAL EQUIPMENT

The following options are available which enable you to customize your lift for your particular operation. Installation instructions are provided as part of each option kit.

1. Extension Sections: 8' extension sections are available.
2. 30' Wire Rope
3. Extra Roller Assemblies
4. Replacement Rollers
5. Extra intermediate supports.
6. Bow Stop.
7. 30" Diameter Handwheel.

3 INSTALLATION AND SETUP

3.1 PRE-INSTALLATION CHECKS

1. Do not assemble the beacher if any part shows any sign of damage.
2. Do not weld or otherwise modify the lift. Such alterations may weaken the structural integrity of the lift and void the warranty.
3. Ensure the boat weight does not exceed the rated capacity of the beacher.
4. This product has been supplied with stainless steel hardware to protect against a harsh marine environment and provide outstanding performance. Due to the chemistry and surface condition of stainless steel, there is a natural tendency for the hardware to “gall, lock up, or seize” during assembly. To prevent this from occurring, it is **highly recommended** that the anti-seize supplied in the hardware bag be applied to the mating surfaces of all stainless steel fasteners before assembly. Lubricants containing molybdenum disulfide, graphite, mica or talc may also be used.
5. During installation, the following precautions must be observed when lifting any part of this equipment:
 - a. Be sure of your footing.
 - b. Bend your knees and lift with your legs.
 - c. Hold the equipment section close to your body when lifting.



CAUTION:

DO NOT EXCEED THE MAXIMUM TORQUE RATING ON ALL BOLTS OF 20 FT-LBS.



WARNING:

FAILURE TO APPLY A SUITABLE LUBRICANT TO THE MATING SURFACES OF STAINLESS STEEL THREADED FASTENERS MAY CAUSE GALLING AND/OR SEIZING OF ASSEMBLY.

The part reference numbers and letters used in the subassembly drawings of sections 3.2 through 3.5 are the same as those listed in the parts lists of Chapter 7.

3.2 TRACK ASSEMBLY

1. Refer to **Figure 3-1**. The track is supplied with the cross ties offset to one side of the track flanges. This gives additional hull clearance. Orient the track so that the cross ties are closer to the ground side of the track. Position the tracks parallel to one another. The 4 Ft long track (1) is the starter track section. The winch mounts to the end without splice plates. Next position 8 FT long track (2) parallel to the previous track section.
2. Remove the two carriage bolts from each splice plate as shown.
3. Slide the track sections together. Insert carriage bolts from outside of track for all splice plates. Install nuts and tighten as shown in **Inset A**.

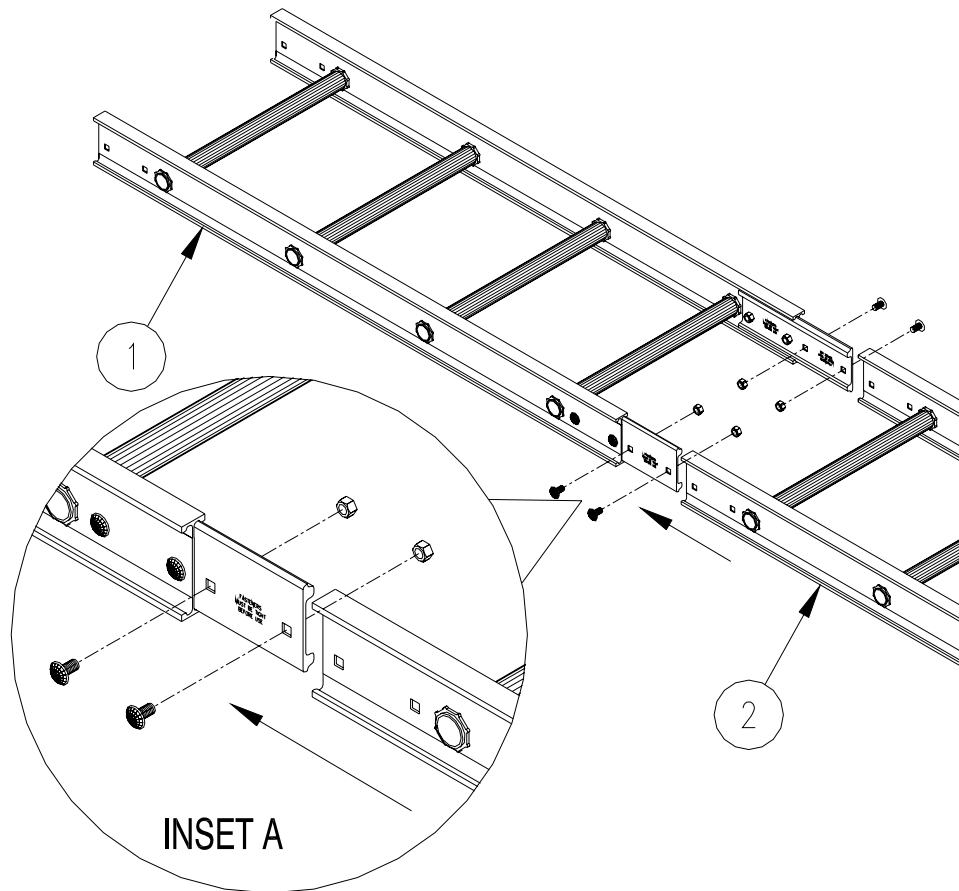


Figure 3-1.
Track Assembly

3.3 ROLLER BRACKET ASSEMBLY

1. Refer to **Figure 3-2**. Ensure that you do not overtighten the wheel axle bolt. It is only necessary to tighten until the nut is snug against the roller bracket.

3.4 ASSEMBLY OF ROLLERS TO TRACK

1. Refer to **Figure 3-2**.
2. The roller assemblies can be attached either to the outside or inside of the track. This will give you two roller widths to which you can fit your watercraft. Space the roller assemblies evenly starting at the water end of the track. The rollers can be adjusted along the entire length of the track to fully support your watercraft depending on its length. The first (2) sets of rollers may be placed closer together to better support the craft as it initially enters the beacher.

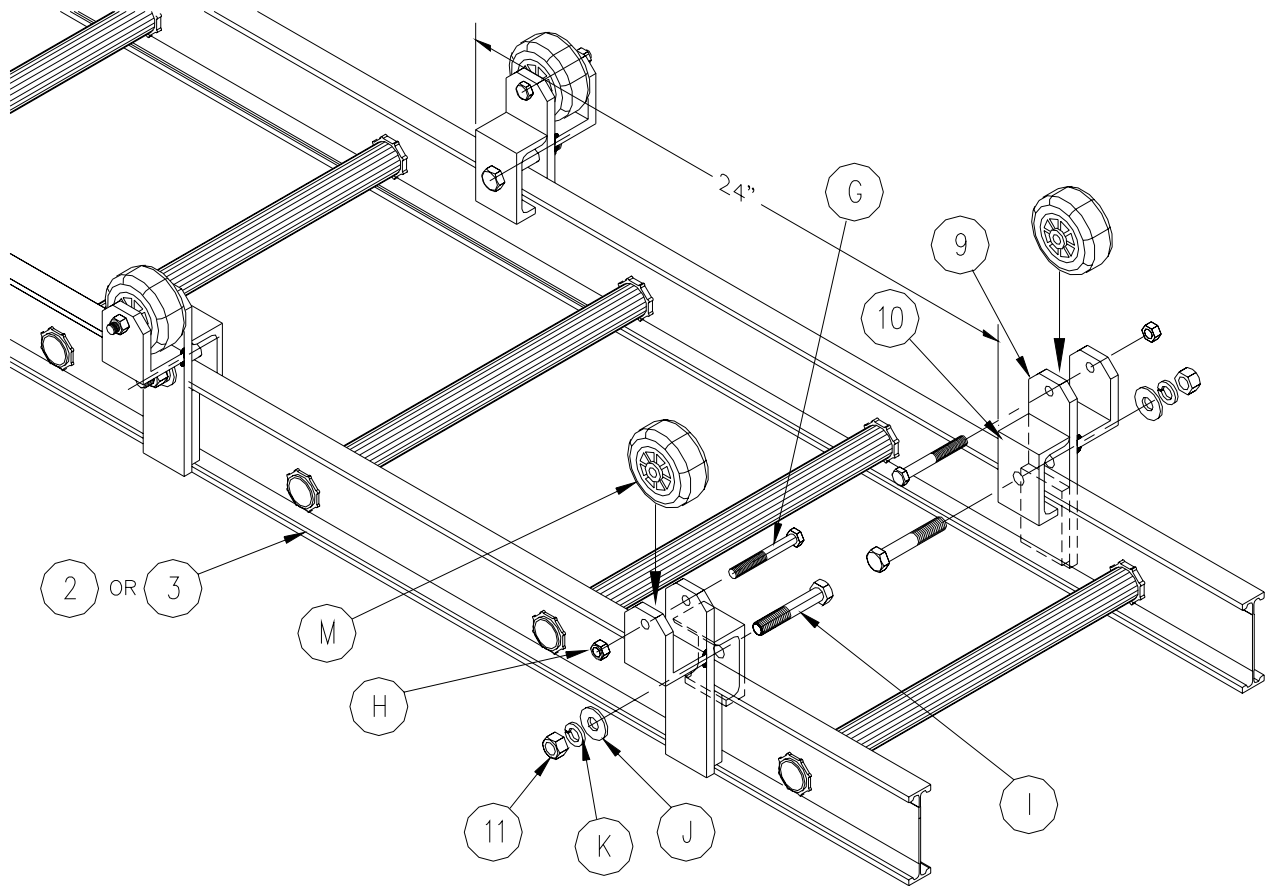


Figure 3-2.
Roller Support Bracket Assembly

3.5 WINCH SUPPORT ASSEMBLY

1. Refer to **Figure 3-3**. Place winch support (11) into first track tube spreader and insert two clevis pins (A). See **Inset B**.
2. Place winch post support (5) into second track tube spreader and insert two clevis pins (A). Fasten other end of winch post support to the winch support using hex head cap screw (F) and hex nut (H).
3. Install two span support clamps (6) onto winch support bracket (11) using hex head cap screw (G) and hex nut (H).
4. Place span support (12) in position. Install two span support clamp brackets (6) onto span support (12) using hex head cap screw (G) and hex nut (H).

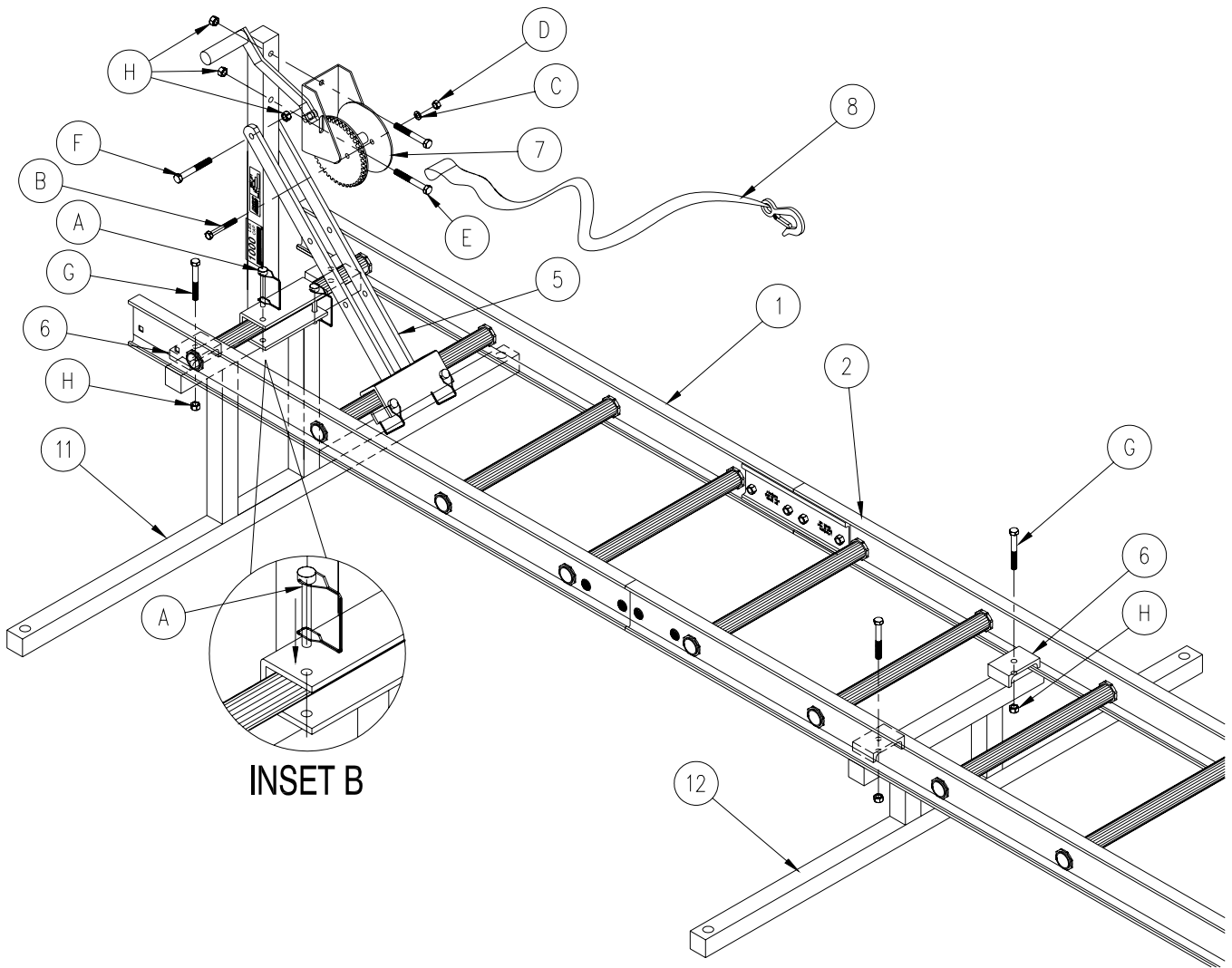


Figure 3-3.
Winch Support Assembly

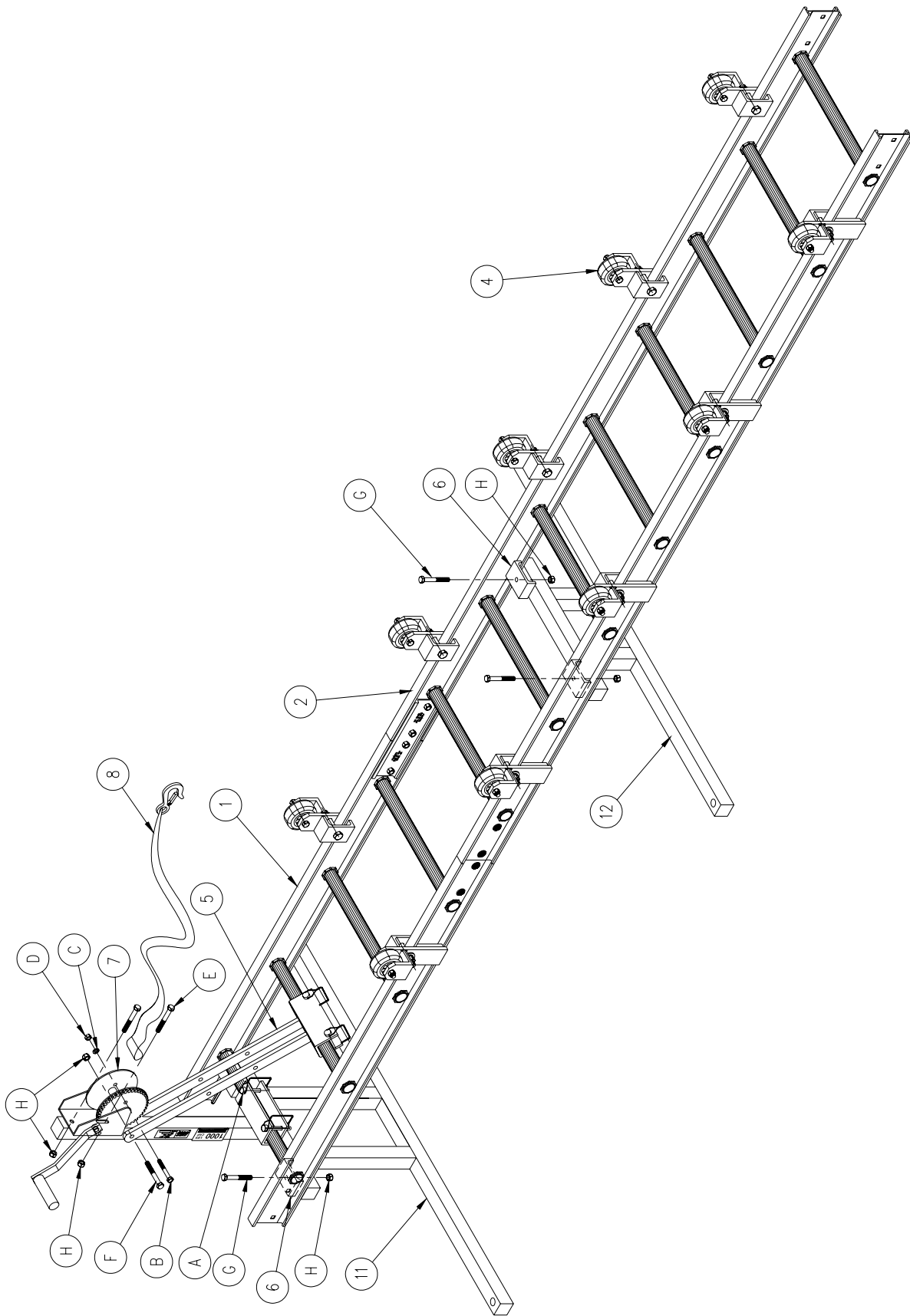


Figure 3-4.
Complete BR1000 Assembly

3.6 FINAL ASSEMBLY CHECKLIST

The beacher and related equipment must be thoroughly inspected prior to each use. Only those who have read and understood this entire manual and related equipment manuals are qualified to do this inspection. This checklist is to be used as a guideline in conjunction with the maintenance and inspection procedures outlined in Chapter 5. It is recommended that the inspection be maintained as a permanent record.

- Ensure all structural members of the railway are free of defects and damage that may affect the integrity.
- Ensure the wheels on the carriage assembly spin freely. If any wheel binds, replace it immediately.
- Ensure all bolts are fastened securely prior to operation.
- Ensure the track is supported by either the ground or Reimann & Georger Corporation track supports
- Ensure the track supports are vertically plumb.
- Ensure the railway installation will clear all obstructions.
- Before operation, ensure the boat is secured to the winch.
- Ensure the railway is not being used beyond its rated capacity.
- Ensure that any user or dealer installed locking devices have been removed before operating the railway.
- Conduct the wire rope inspection procedure described in Chapter 5 at least once per month.

4 OPERATION

4.1 BEFORE OPERATING THE BEACHER

1. Read and thoroughly understand the instructions and ensure that everyone understands the proper operating procedures.
2. Do not use the beacher if it shows any signs of damage.
3. Ensure that all bolts and nuts are fastened securely prior to operation.
4. Never try lifting anything other than a watercraft with this lift.



WARNING:

NEVER TRY TO USE THIS EQUIPMENT BEYOND ITS RATED CAPACITY. THIS CAN DAMAGE THE LIFT AND/OR WATERCRAFT RESULTING IN PERSONAL INJURY.

THE WATERCRAFT MUST BE PROPERLY SECURED ON THE LIFT BEFORE DOING ANY RAISING OR LOWERING. FAILURE TO DO THIS CAN CAUSE EQUIPMENT DAMAGE AND/OR PERSONAL INJURY.



CAUTION:

NEVER TRY TO LIFT OR LAUNCH YOUR WATERCRAFT IN ROUGH WATER CONDITIONS. THIS CAN DAMAGE YOUR WATERCRAFT AND/OR THE BEACHER.

6. Do not operate the lift under the influence of drugs, alcohol, or medication.
7. Completely remove any user or dealer installed locking devices.



CAUTION:

NEVER TAMPER WITH THE WINCH MECHANISM. THIS CAN CAUSE EQUIPMENT DAMAGE THAT WILL INVALIDATE YOUR WARRANTY.

4.2 RAISING AND LOWERING THE WATERCRAFT

1. Approach the water end of the beacher with your watercraft. Pay out a sufficient amount of the winch strap or wire rope to attach the hook to the front of the watercraft. Guide the watercraft onto the beacher, ensuring that it is centered. Engage the winch pawl and rotate the winch handle to pull the watercraft up onto the rollers. Continue this until the watercraft is secured.
2. To lower the watercraft into the water, grab the winch handle securely and release the winch pawl. Pay out the winch strap or wire rope slowly, ensuring that the strap or wire rope remains taut. When the watercraft is sufficiently down the beacher to float, remove the strap or wire rope hook from the watercraft and reel it back onto the winch. If the strap or wire rope is allowed to become slack, the craft may move down the beacher in an uncontrolled fashion. DO NOT attempt to stop a winch handle that is freewheeling. Serious injury may result.
3. Keep fingers and clothing clear of all moving parts. Keep people clear during operation of the beacher.
4. Never allow people on the watercraft any time it is suspended above the water on the lift.



WARNING:

DO NOT STAND OR WALK ON THE BEACHER TRACK. THIS CAN CAUSE SERIOUS PERSONAL INJURY.

5. Check the lift periodically for frayed straps, wire ropes and/or binding wheels.

5 INSPECTION AND MAINTENANCE

5.1 GENERAL MAINTENANCE RULES



WARNING:

NEVER PERFORM WORK IN OR ON THE WATERCRAFT WHEN IT IS SUSPENDED ABOVE THE WATER ON THE BEACHER.



CAUTION:

POOR OR IMPROPER MAINTENANCE CAN LEAD TO EQUIPMENT DAMAGE OR FAILURE.

1. Do not weld or otherwise modify the lift. Such alterations may weaken the structural integrity of the lift and invalidate your warranty.
2. Completely remove the watercraft before performing any type of maintenance or repair on the beacher.

5.2 WIRE ROPE INSPECTION PROCEDURE

Inspect the wire rope at least once per month for signs of wear, damage, or pinching. Inspect the entire wire rope working length. Thoroughly inspect the rope sections that pass over pulleys or drums, or that make opposing turns. Inspect wire rope and end attachments carefully. While inspecting, examine pulleys, guards, guides, drums, flanges, and other surfaces contacting wire rope during operation. Correct any condition harming the rope in use or other damage or worn surfaces at this time.



WARNING:

WEAR HEAVY LEATHER GLOVES WHEN HANDLING WIRE ROPE. INSUFFICIENT HAND PROTECTION WHEN HANDLING WIRE ROPE CAN CAUSE SERIOUS PERSONAL INJURY.

Remove and immediately replace wire rope with one or more of the following defects:

1. Corrosion
2. Broken wires: (See Figure 5-1.)
 - (a) One or more valley breaks. A valley break is a wire break occurring in the valley between two adjacent strands.
 - (b) Six randomly distributed broken wires in one rope lay. A rope lay is the length of rope along which one strand makes a complete revolution around the rope. Keeping the rope clean and wound evenly on the winch drum will increase its life and efficiency.
3. Abrasion: Scrubbing, flattening or peening causing loss of more than one-third of the original diameter of the outside wires.
4. Kinking: Severe kinking, crushing, bird caging or other damage causing distortion of the rope structure. Bird caging is a bulging in the wire rope caused by the individual wires becoming untwisted. This untwisting of individual wires is usually caused by impact loading on the wire rope.
5. Heat damage: Evidence of any heat damage caused by a torch or by contact with electrical wires.
6. Reduction of more than 3/64 inch from 1/4 inch diameter wire rope, 1/16 inch from 5/16 or 3/8 inch diameter wire rope. Marked reduction in diameter indicates core deterioration.

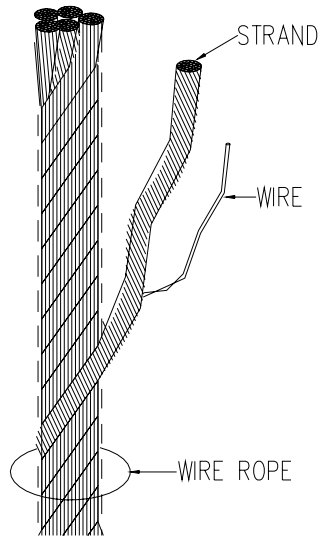


Figure 5-1.
Wire Rope Components

5.3 ANNUAL INSPECTION

At least once a year, the beacher must be thoroughly inspected using the following procedure.



WARNING:
DO NOT ALLOW ANYBODY TO USE THE BEACHER UNTIL THIS MAINTENANCE IS COMPLETED.

1. Tighten all bolts.
2. Check the rollers to insure that they spin freely. If they bind, replace them immediately.
3. Check frame thoroughly for defects.
4. Perform the winch maintenance as described in Section 5.4.

5.4 ANNUAL WINCH MAINTENANCE



WARNING:
THE WINCH MAINTENANCE SCHEDULE MUST BE FOLLOWED TO AVOID POSSIBLE EQUIPMENT FAILURE OR PERSONAL INJURY.

1. Apply automotive type grease to both the pinion and drum gear teeth, and to the outside diameter of the drum bearing. Always keep this light film of grease on the gear teeth.
2. During each usage, check for proper ratchet operation. The ratchet must emit an audible click as it passes over the gear teeth. This shows that the pawl is engaged and working properly.

5.5 STORAGE PROCEDURE

1. Protect your beacher as far as possible from damage caused by environmental factors such as airborne fallout, chemicals, tree sap, and weather hazards.
2. Do not allow anyone to swim or play near the beacher at any time.
3. Secure the beacher and your watercraft when unattended. Never assume you will find the beacher in the same condition that you left it.

6 TROUBLESHOOTING

The following chart is intended to assist with troubleshooting your BR1000 beacher. While not all inclusive, the chart outlines the most common causes of a problem and the recommended course of action.

SYMPTOM	CAUSE AND CORRECTIVE ACTION
Winch fails to hold the watercraft in a given position.	The winch pawl is not engaged or damaged.
Winch is operating properly, but raising the watercraft is either difficult or impossible.	Excessive slope, or weight of watercraft. Check weight and slope of the beacher. Rollers are not rolling freely. Free up or replace the rollers. Watercraft off center or moving up the beacher on an angle relative to the beacher. Reposition the watercraft on the beacher.
Watercraft shifts position when operating the beacher.	Watercraft is not properly positioned on the beacher—failure to properly position watercraft can cause equipment damage and/or serious personal injury.
Lowering operation triggers a “freewheeling” of the handwheel.	Excessive slack in the winch strap or wire rope. Excessive slope of beacher. Ensure there is no slack in the strap or wire rope, check the slope of the beacher.

7 PARTS LISTS

Each reference number in the following parts lists can be matched with the reference number referred to in both the text and illustrations of Chapter 3, Installation and Setup.



WARNING:

FAILURE TO APPLY A SUITABLE LUBRICANT TO THE MATING SURFACES OF STAINLESS STEEL THREADED FASTENERS MAY CAUSE GALLING AND/OR SEIZING OF ASSEMBLY.

7.1 BR1000 BEACHER RAILWAY SYSTEM

REF #	PART #	QTY	DESCRIPTION
1	3501210	1	BR1000 4 FT TRACK STARTER SECTION W/ PLATES
2	0420080	1	BR1000 8 FT TRACK LESS PLATES
3	0400572	1 (2)	BR1000 TRACK 8 FT W/ PLATES (QTY 2 FOR 28 FT)
4	3501200	10	ROLLER BRACKET ASSEMBLY (12 FT TRACK LENGTH)
4	3501200	18	ROLLER BRACKET ASSEMBLY (20 FT TRACK LENGTH)
4	3501200	26	ROLLER BRACKET ASSEMBLY (28 FT TRACK LENGTH)
5	3501320	1	BR1000 WINCH POST SUPPORT
6	3501450	4	BR1000 SPAN SUPPORT CLAMP
7	7735019	1	DL1100A WINCH
8	7735018	1	WINCH STRAP (12 & 20 FT TRACK LENGTH)
8	3501775	1	CABLE ASSEMBLY 41' (28 FT TRACK LENGTH)
11	3501300	1	BR1000 WINCH SUPPORT
12	3501310	1	BR1000 SPAN SUPPORT
A	5800142	4	5/16 X 2-1/2 LG CLEVIS PIN
B	5896230	1	5/16-18 X 2-1/2 LG HHCS
C	5894004	1	5/16 SPLIT LOCK WASHER
D	5896375	1	5/16-18 HEX NUT
E	5896253	2	3/8-16 X 2-1/2 HHCS
F	5896268	1	3/8-16 X 2-3/4 HHCS
G	5896255	4	3/8 X 3 HHCS
H	5897016	7	3/8-16 HEX NYLOCK NUT

7.2 BR1000 ROLLER BRACKET ASSEMBLY

REF #	PART #	QTY	DESCRIPTION
9	3501330	1	BR1000 ROLLER BRACKET
10	3501455	1	BR1000 ROLLER BRACKET CLAMP
G	5896255	1	3/8 X 3 HHCS
H	5897016	1	3/8-16 HEX NYLOCK NUT
I	5896288	1	1/2 X 3 HHCS
J	5896410	1	1/2 SAE FLAT WASHER
K	5806244	1	1/2 SPLIT LOCK WASHER
L	5896379	1	1/2 HEX NUT
M	7635017	1	3" URETHANE WHEEL

LIMITED WARRANTY

Reimann & Georger Corporation MARINE PRODUCTS

R & G Marine products, hereafter referred to as the “Manufacturer”, extends this limited warranty to the original purchaser of this product. The original purchaser, hereinafter referred to as the “Buyer”, is defined as the first legal owner of this product other than an authorized distributor or dealer who has bought the product from the Manufacturer for resale to the public. **The Buyer must complete and return the Warranty Registration section of the provided Warranty Card to make this limited warranty effective.**

CONSUMER PRODUCT PROVISIONS

I. ARTICLE I—CONSUMER PRODUCT PROVISIONS: THE FOLLOWING PROVISIONS SHALL BE APPLICABLE IF THIS PRODUCT IS BEING PURCHASED FOR PERSONAL, FAMILY OR HOUSEHOLD PURPOSES.

THE CONSUMER PRODUCT PROVISIONS CONTAINED IN THIS ARTICLE I SHALL APPLY UNLESS THIS PRODUCT IS BEING PURCHASED SOLELY FOR COMMERCIAL OR INDUSTRIAL USE, IN WHICH EVENT THE PROVISIONS CONTAINED IN ARTICLE II BELOW SHALL APPLY AND THE PROVISIONS CONTAINED IN THIS ARTICLE I SHALL BE INAPPLICABLE.

A. 2-YEAR LIMITED WARRANTY

The Manufacturer warrants to the Buyer that all supplied parts shall be free of defects in material and workmanship for a period of two (2) years from date of original purchase. This limited warranty covers the cost of all parts and labor needed to repair any item that is found to be defective in material and workmanship. Items covered include cables, sheaves, chains, motors, reducers, switches, control panels and ground fault circuit interrupters.

B. 15-YEAR LIMITED WARRANTY ON VL/PL SERIES ALUMINUM FRAME EXTRUSION

The Manufacturer warrants to the Buyer that the frame and extrusions shall be free of defects in material and workmanship for a period of fifteen (15) years from date of original purchase. This limited warranty covers the cost of all parts and labor needed to repair any item that is found to be defective in material and workmanship.

C. MANUFACTURER’S OBLIGATIONS

The Manufacturer’s sole obligation under either of these limited warranties is the replacement or repair, at the Manufacturer’s discretion, of parts found to be defective.

D. NO SPECIAL, INCIDENTAL OR CONSEQUENTIAL DAMAGES

IN NO EVENT SHALL THE MANUFACTURER BE LIABLE TO THE BUYER OR ANY PERSON FOR ANY INDIRECT, SPECIAL, INCIDENTAL, OR CONSEQUENTIAL LOSSES OR DAMAGES CONNECTED WITH THE USE OF THE PRODUCT UNDER WARRANTY. SUCH DAMAGES FOR WHICH THE MANUFACTURER SHALL NOT BE RESPONSIBLE INCLUDE, BUT ARE NOT LIMITED TO, LOST TIME AND CONVENIENCE, LOSS OF USE OF THE PRODUCT, THE COST OF A PRODUCT RENTAL, COSTS OF GASOLINE, TELEPHONE, TRAVEL, OR LODGING, THE LOSS OF PERSONAL OR COMMERCIAL PROPERTY, AND THE LOSS OF REVENUE.

Some States do not allow the exclusion or limitation of incidental or consequential damages, so the above limitation or exclusion may not apply to you.

E. NO LIABILITY IN EXCESS OF PURCHASE PRICE

IN NO EVENT SHALL THE MANUFACTURER'S OBLIGATIONS UNDER THIS LIMITED WARRANTY EXCEED THE PURCHASE PRICE OF THE PRODUCT.

F. NO EXTENSION OF STATUTE OF LIMITATIONS

ANY REPAIRS PERFORMED UNDER EITHER OF THESE WARRANTIES SHALL NOT IN ANY WAY EXTEND THE TWO-YEAR AND FIFTEEN-YEAR STATUTES OF LIMITATIONS CONTAINED IN THIS LIMITED WARRANTY.

G. PROCEDURE FOR WARRANTY PERFORMANCE

If the product fails to perform to the Manufacturer's specifications, the Buyer must contact the dealer from whom the product was purchased. The Buyer must provide the dealer with the applicable model and serial numbers, the date of purchase, and the nature of the problem.

H. PREAPPROVAL OF LABOR COSTS

All labor costs related to a dealer's performance of the warranty obligations under this limited warranty must be pre-approved by Reimann & Georger Corporation

I. NO OTHER EXPRESS WARRANTIES

THE MANUFACTURER IS NOT SUBJECT TO ANY EXPRESS WARRANTIES OTHER THAN THOSE SET FORTH ABOVE.

J. LIMIT ON DURATION OF IMPLIED WARRANTIES

THE DURATION OF ANY IMPLIED WARRANTIES UNDER APPLICABLE STATE LAW RELATING TO THE PURCHASE OF THIS PRODUCT SHALL BE LIMITED TO A PERIOD OF TWO (2) YEARS FROM THE DATE OF PURCHASE.

Some States do not allow limitations on how long an implied warranty lasts, so the above limitations may not apply to you.

K. QUESTIONS REGARDING LIMITED WARRANTY

Any questions regarding this limited warranty or the procedure which the consumer should follow in order to obtain performance of any warranty obligation may be addressed to either the dealer from whom this product is purchased or to Reimann & Georger Corporation, R & G Marine Products, RGC Construction Equipment, P.O. Box 681, Buffalo, NY 14240.

L. EXCLUSIONS FROM LIMITED WARRANTY. THIS LIMITED WARRANTY DOES NOT COVER ANY OF THE FOLLOWING:

1. Equipment which has been abused, damaged, used beyond rated capacity, or which is damaged or has defects caused by repairs or service completed by persons other than authorized service personnel.
2. Costs of repairing damage caused by environmental factors which include, but are not limited to, airborne fallout, chemicals, tree sap, salt, ocean spray, and water hazards.
3. Damage caused by acts of God which include, but are not limited to, hailstorms, windstorms, tornadoes, sandstorms, lightning, floods, and earthquakes.
4. Damage under conditions caused by fire or accident, by abuse or negligence, by improper installation, by misuse, by incorrect operation, by "normal wear and tear", by improper adjustment or alteration, by alterations

not done by the Manufacturer, or by failure of product parts from such alterations.

5. Costs of repairing damage caused by poor or improper maintenance, costs of normally scheduled maintenance, or the cost of replacing any parts unless done as the result of a repair covered by your two-year limited warranty.
6. Costs of modifying the product in any way once delivered to the Buyer, even if such modifications were added as a production change on other products made after the Buyer's product was built.

M. RIGHT TO MODIFY PRODUCT

The Manufacturer has the right to modify this product at any time without incurring any obligation to make the same or similar modifications on products previously purchased.

N. NO AUTHORITY TO ALTER WARRANTY

No agent, representative, distributor or dealer has any authority to alter the terms of this warranty in any way.

O. SPECIFIC LEGAL RIGHTS

This warranty gives you specific legal rights and you may also have other rights which vary from State to State.

COMMERCIAL PRODUCT PROVISIONS

II. ARTICLE II—COMMERCIAL PRODUCT PROVISIONS: THE FOLLOWING PROVISIONS SHALL BE APPLICABLE ONLY IF THIS PRODUCT IS BEING PURCHASED SOLELY FOR COMMERCIAL OR INDUSTRIAL USE. IF THIS PRODUCT IS BEING PURCHASED FOR PERSONAL, FAMILY OR HOUSEHOLD PURPOSES, THE PROVISIONS CONTAINED IN THIS ARTICLE II SHALL NOT BE APPLICABLE AND THE PROVISIONS CONTAINED IN ARTICLE I ABOVE SHALL APPLY.

A. 1-YEAR LIMITED WARRANTY

The Manufacturer warrants to the Buyer that all supplied parts shall be free of defects in material and workmanship for a period of one (1) year from date of original purchase. This limited warranty covers the cost of all parts and labor needed to repair any item that is found to be defective in material and workmanship. Items covered include cables, sheaves, chains, motors, reducers, switches, control panels and ground fault circuit interrupters.

B. 5-YEAR LIMITED WARRANTY ON VL/PL SERIES ALUMINUM FRAME EXTRUSION

The Manufacturer warrants to the Buyer that the frame and extrusions shall be free of defects in material and workmanship for a period of five (5) years from date of original purchase. This limited warranty covers the cost of all parts and labor needed to repair any item that is found to be defective in material and workmanship.

C. MANUFACTURER'S OBLIGATIONS

The Manufacturer's sole obligation under either of these limited warranties is the replacement or repair, at the Manufacturer's discretion, of parts found to be defective.

D. NO SPECIAL, INCIDENTAL, OR CONSEQUENTIAL DAMAGES

IN NO EVENT SHALL THE MANUFACTURER BE LIABLE TO THE BUYER OR ANY PERSON FOR ANY INDIRECT, SPECIAL, INCIDENTAL, OR CONSEQUENTIAL LOSSES OR DAMAGES CONNECTED WITH THE USE OF THE PRODUCT UNDER WARRANTY. SUCH DAMAGES FOR WHICH THE MANUFACTURER SHALL NOT BE RESPONSIBLE INCLUDE, BUT ARE NOT LIMITED TO, LOST TIME AND CONVENIENCE, LOSS OF USE OF THE PRODUCT, THE COST OF A PRODUCT RENTAL, COSTS OF GASOLINE, TELEPHONE, TRAVEL, OR LODGING, THE LOSS OF PERSONAL OR COMMERCIAL PROPERTY, AND THE LOSS OF REVENUE.

E. NO LIABILITY IN EXCESS OF PURCHASE PRICE

IN NO EVENT SHALL THE MANUFACTURER'S OBLIGATIONS UNDER THIS LIMITED WARRANTY EXCEED THE PURCHASE PRICE OF THE PRODUCT.

F. NO EXTENSION OF STATUTE OF LIMITATIONS

ANY REPAIRS PERFORMED UNDER EITHER OF THESE WARRANTIES SHALL NOT IN ANY WAY EXTEND THE RESPECTIVE STATUTES OF LIMITATIONS CONTAINED IN THIS LIMITED WARRANTY.

G. WAIVER OF OTHER WARRANTIES

THESE EXPRESS WARRANTIES ARE IN LIEU OF AND EXCLUDE ANY AND ALL OTHER WARRANTIES, EXPRESS OR IMPLIED, INCLUDING, BUT NOT LIMITED TO, THE IMPLIED WARRANTIES OR MERCHANTABILITY AND FITNESS FOR A PARTICULAR PURPOSE.

H. PROCEDURE FOR WARRANTY PERFORMANCE

If the product fails to perform to the Manufacturer's specifications, the Buyer must contact the dealer from whom the product was purchased. The Buyer must provide the dealer with the applicable model and serial numbers, the date of purchase, and the nature of the problem.

I. PREAPPROVAL OF LABOR COSTS

All labor costs related to a dealer's performance of the warranty obligations under this limited warranty must be pre-approved by Reimann & Georger Corporation

J. EXCLUSIONS FROM WARRANTY. THIS LIMITED WARRANTY DOES NOT COVER ANY OF THE FOLLOWING:

1. Equipment which has been abused, damaged, used beyond rated capacity, or which is damaged or has defects caused by repairs or service completed by persons other than authorized service personnel.
2. Costs of repairing damage caused by environmental factors which include, but are not limited to, airborne fallout, chemicals, tree sap, salt, ocean spray, and water hazards.
3. Damage caused by acts of God which include, but are not limited to, hailstorms, windstorms, tornadoes, sandstorms, lightning, floods, and earthquakes.
4. Damage under conditions caused by fire or accident, by abuse or negligence, by improper installation, by misuse, by incorrect operation, by "normal wear and tear", by improper adjustment or alteration, by alterations not done by the Manufacturer, or by failure of product parts from such alterations.
5. Costs of repairing damage caused by poor or improper maintenance, costs of normally scheduled maintenance, or the cost of replacing any parts unless done as the result of a repair covered by your one-year limited warranty.
6. Costs of modifying the product in any way once delivered to the Buyer, even if such modifications were added as a production change on other products made after the Buyer's product was built.

K. RIGHT TO MODIFY PRODUCT

The Manufacturer has the right to modify this product at any time without incurring any obligation to make the same or similar modifications on products previously purchased.

L. NO AUTHORITY TO ALTER WARRANTY

No agent, representative, distributor, or dealer has any authority to alter the terms of this warranty in any way.

M. SPECIFIC LEGAL RIGHTS

This warranty gives you specific legal rights, and you may also have other rights which vary from State to State.