



MOTOR STOP HVL/VL/HL LIFTS INSTRUCTIONS

REIMANN & GEORGER CORPORATION
MARINE PRODUCTS
P/N 6112122

BUFFALO, NY
6/04/08

TABLE OF CONTENTS

| CHAPTER | TITLE | PAGE |
|----------|---|----------|
| 1 | SAFETY | 1 |
| 1.1 | Introduction | 1 |
| 1.2 | Safety Definitions | 1 |
| 1.3 | Equipment Safety Labels..... | 1 |
| 1.4 | Safety Rules | 1 |
| 2 | INSTALLATION AND SETUP | 3 |
| 2.1 | Pre-Installation Checks | 3 |
| 2.2 | Prior To Setup | 3 |
| 2.3 | Motor Stop Installation..... | 3 |
| 2.4 | Adjusting Motor Stop..... | 4 |
| 3 | INSPECTION AND MAINTENANCE | 7 |
| 3.1 | General Maintenance Rules..... | 7 |
| 3.2 | Annual Inspection..... | 7 |
| 3.3 | Storage Procedure..... | 7 |
| 4 | PARTS LISTS..... | 8 |
| 4.1 | VL1.6-4K, HVL4K, HL3-9K 2FT Motor Stop Carton of Parts | 8 |
| 4.2 | VL1.6-4K, HVL4K, & HL3-9K 3FT Motor Stop Carton of Parts..... | 8 |
| 4.3 | HVL/VL5K 2FT Motor Stop Carton of Parts | 8 |
| 4.4 | HVL/VL5K 3FT Motor Stop Carton of Parts | 8 |
| 4.5 | VL6-7K & HVL7K 2FT Motor Stop Carton of Parts | 9 |
| 4.6 | VL6-7K & HVL7K 3FT Motor Stop Carton of Parts | 9 |
| 4.7 | VL10K 3FT Motor Stop Carton of Parts..... | 9 |
| 4.8 | VL1.6-4K, HVL4K, HL3-9K Motor Stop Bag of Bolts | 9 |
| 4.9 | HVL/VL5K Motor Stop Bag of Bolts | 9 |
| 4.10 | VL6-7K & HVL7K Motor Stop Bag of Bolts..... | 10 |
| 4.11 | VL10K Motor Stop Bag of Bolts | 10 |

LIST OF FIGURES

| FIGURE | DESCRIPTION | PAGE |
|--------|---------------------------------------|------|
| 2-1 | Motor Stop Assembly (VL Lifts) | 4 |
| 2-2 | Motor Stop Adjustment (VL Lifts)..... | 5 |
| 2-3 | Motor Stop Assembly (VL Lifts) | 5 |
| 2-4 | Motor Stop Adjustment (VL Lifts)..... | 6 |

1 SAFETY

1.1 INTRODUCTION

Your Reimann & Georger Corporation Marine Products Motor Stop kit is designed to aid in proper positioning of boats on the lift. Your Motor Stop kit is well-designed and well-built. However, like any other equipment, it can malfunction or become hazardous in the hands of an inexperienced and/or untrained user. Therefore, read this manual and your related Lift manual, and related equipment manuals thoroughly before installing this kit and operating your lift to provide maximum safety for all operating personnel, and to get the maximum benefit from your equipment.

1.2 SAFETY DEFINITIONS

A safety message alerts you to potential hazards that could hurt you or others or cause property damage. The safety messages or signal words for product safety signs are **DANGER**, **WARNING**, and **CAUTION**. Each safety message is preceded by a safety alert symbol and is defined as follows:

DANGER: Indicates an imminently hazardous situation which, if not avoided, **will** cause death or serious injury. This safety message is limited to the most extreme situations.

WARNING: Indicates a potentially hazardous situation which, if not avoided, **could** result in death or serious injury.

CAUTION: Indicates a potentially hazardous situation which, if not avoided, **may** result in minor or moderate injury. It may also be used to alert against unsafe practices and property-damage-only accidents.

1.3 EQUIPMENT SAFETY LABELS

These labels warn you of potential hazards that could cause injury. Read them carefully. If a label comes off or becomes illegible, contact a Reimann & Georger Corporation dealer for a replacement.

1.4 SAFETY RULES



WARNING:

DO NOT INSTALL THIS KIT AND OPERATE THE LIFT WITHOUT READING BOTH THIS MANUAL AND YOUR VERTICAL LIFT MANUAL. FAILURE TO DO THIS CAN LEAD TO EQUIPMENT MISUSE WITH RESULTING DAMAGE AND/OR SERIOUS PERSONAL INJURY. CONTACT YOUR RGC® MARINE DEALER IF YOU HAVE ANY QUESTIONS.

1. Do not install this kit without first replacing any damaged or defective parts.
2. The motor stop does not increase the rated capacity of the lift. Never use the lift beyond its rated capacity. This can damage the kit assembly, lift, and/or boat with resulting serious personal injury.
3. Never try using any part of this kit in an application for which it was not designed.
4. Do not weld or otherwise modify any part of this kit. Such alterations may weaken the structural integrity of the lift and void the warranty.
5. Do not try installing the motor stop with the weight of the boat on the lift. This can cause equipment damage and/or personal injury.
6. The following precautions must be observed when lifting any part of this equipment:
 - a. Be sure of your footing.
 - b. Bend your knees and lift with your legs.
 - c. Hold the equipment section close to your body when lifting.
7. After the motor stop is installed, the safety checks in Steps 8 through 25 must be performed on your lift prior to operation. Details on these checks are given in your lift manual.
8. Before allowing anyone to operate the lift, be sure they fully understand the proper operating procedure.

9. Do not operate the lift under the influence of drugs, alcohol, or medication.
10. Keep people and pets clear during operation of the lift.
11. Keep fingers and clothing clear of all moving parts.
12. Never allow people in the boat any time it is suspended above the water on the platform.



WARNING:

DO NOT STAND OR WALK ON THE PLATFORM WHILE IT IS IN ANY RAISED POSITION. THIS CAN CAUSE SERIOUS PERSONAL INJURY.

13. Do not allow anyone to swim or play under, near or on the lift at any time.
14. Ensure that all bolts and nuts are fastened securely on both this kit and the lift prior to operation.
15. Ensure that the frame is level and square.
16. Completely remove any user or dealer installed locking devices before operating the lift.
17. The boat must be secured on the lift before raising or lowering. Failure to do this can cause equipment damage and/or serious personal injury.
18. Check the lift periodically for frayed cables and/or binding pulleys. If any pulley binds, replace it immediately.
19. Do not try making any adjustments on the lift during operation.
20. Contact your dealer if the winch mechanism fails to perform as described in the Operation chapter of your vertical lift manual.
21. Never tamper with the winch mechanism. This can cause equipment damage.
22. When using a direct drive or motorized friction drive, understand the use of all controls and connections provided with it.



WARNING:

ALL ELECTRIC DRIVES MUST BE INSTALLED AND INSPECTED BY A CERTIFIED ELECTRICIAN IN ACCORDANCE WITH LOCAL ELECTRICAL CODES. THIS INSTALLATION MUST INCLUDE A PROPERLY WORKING GROUND FAULT CIRCUIT INTERRUPTER. (G.F.C.I.)

23. Never use the lift to hang or store any auxiliary equipment such as boating hardware.
24. The handwheel or power drive must turn clockwise when raising the platform and counter-clockwise when lowering the platform. If the platform operates in the reverse sense, you have reeved the winch incorrectly. You **MUST** follow the winch reeving instructions in your vertical lift manual to prevent equipment damage and/or personal injury. The brake pawl must click during platform raising, indicating that the brake is operative. The self-activating brake mechanism must provide a controlled lowering of the platform.



WARNING:

NEVER RELEASE THE BRAKE PAWL OF THE WINCH. THIS CAN TRIGGER AN UNCONTROLLED SPIN-DOWN OR “FREEWHEEL” OF THE HANDWHEEL. IF FREEWHEELING OCCURS, NEVER TRY TO STOP IT AS THIS CAN CAUSE SERIOUS PERSONAL INJURY.

25. Padlock the handwheel to the post or lock out your power drive to prevent unauthorized use when your lift is left unattended.

2 INSTALLATION AND SET UP

2.1 PRE-INSTALLATION CHECKS

1. Do not assemble this kit or any other component of the lift if any part appears to be damaged.
2. Do not weld or other wise modify any portion of the lift. Such alterations may weaken the structural integrity of the lift and void the warranty.
3. This product has been supplied with stainless steel hardware to protect against a harsh marine environment and provide outstanding performance. Due to the chemistry and surface condition of stainless steel, there is a natural tendency for the hardware to “gall, lock up, or seize” during assembly. To prevent this from occurring, it is **highly recommended** that the anti-seize supplied in the hardware bag be applied to the mating surfaces of all stainless steel fasteners before assembly. Lubricants containing molybdenum disulfide, graphite, mica or talc may also be used.



CAUTION:

DO NOT EXCEED THE MAXIMUM TORQUE RATING ON ALL BOLTS OF 20 FT-LBS.



WARNING:

FAILURE TO APPLY A SUITABLE LUBRICANT TO THE MATING SURFACES OF STAINLESS STEEL THREADED FASTENERS MAY CAUSE GALLING AND/OR SEIZING OF ASSEMBLY.

2.2 PRIOR TO SETUP

The part reference letters used in the assembly section 2.3 are the same as those shown in Figure 2-1 and listed in the parts lists of Chapter 4.

2.3 MOTOR STOP INSTALLATION

HVL & VL LIFTS

1. **Refer to Figure 2-1.** Attach motor stop bumper mounting angles (B) to carpeted wood motor stop bumper (A) using one each; carriage bolt (H), flat washer (J), lock washer (K), and hex nut (L) for each mounting stop angle.

NOTE: The carpets seam should be facing the center (inside) of the lift, with the Bumper-mounting surface being parallel to the carriage load tube.

MAKE SURE HEAD OF CARRIAGE BOLT IS PULLED BELOW THE SURFACE OF THE BUMPER TO PREVENT MARRING OF ANY BOAT SURFACES.

2. Loosely attach both motor stop channel mounting angles (C) to the rear lifting carriage load tube using one square bend u-bolt (I), and two flat washers (J), two lock washers (K), and two hex nuts (L), for each mounting angle. The vertical leg should face the outside of lift.
3. Slide three spring nuts (F) into each aluminum channel. Insert hex head cap screws (G) through channel mounting angle holes and bumper mounting angle, then thread into spring nuts. Do not tighten.
4. Repeat step three for other side of motor stop.

HL LIFTS

Note: Motor stop mounts to Guide-on support frame.

1. **Refer to Figure 2-3.** Attach motor stop bumper mounting angles (B) to carpeted wood motor stop bumper (A) using one each; carriage bolt (H), flat washer (J), lock washer (K), and hex nut (L) for each mounting stop angle.

NOTE: The carpets seam should be facing the center (inside) of the lift, with the Bumper-mounting surface being parallel to the carriage load tube.

MAKE SURE HEAD OF CARRIAGE BOLT IS PULLED BELOW THE SURFACE OF THE BUMPER TO PREVENT MARRING OF ANY BOAT SURFACES.

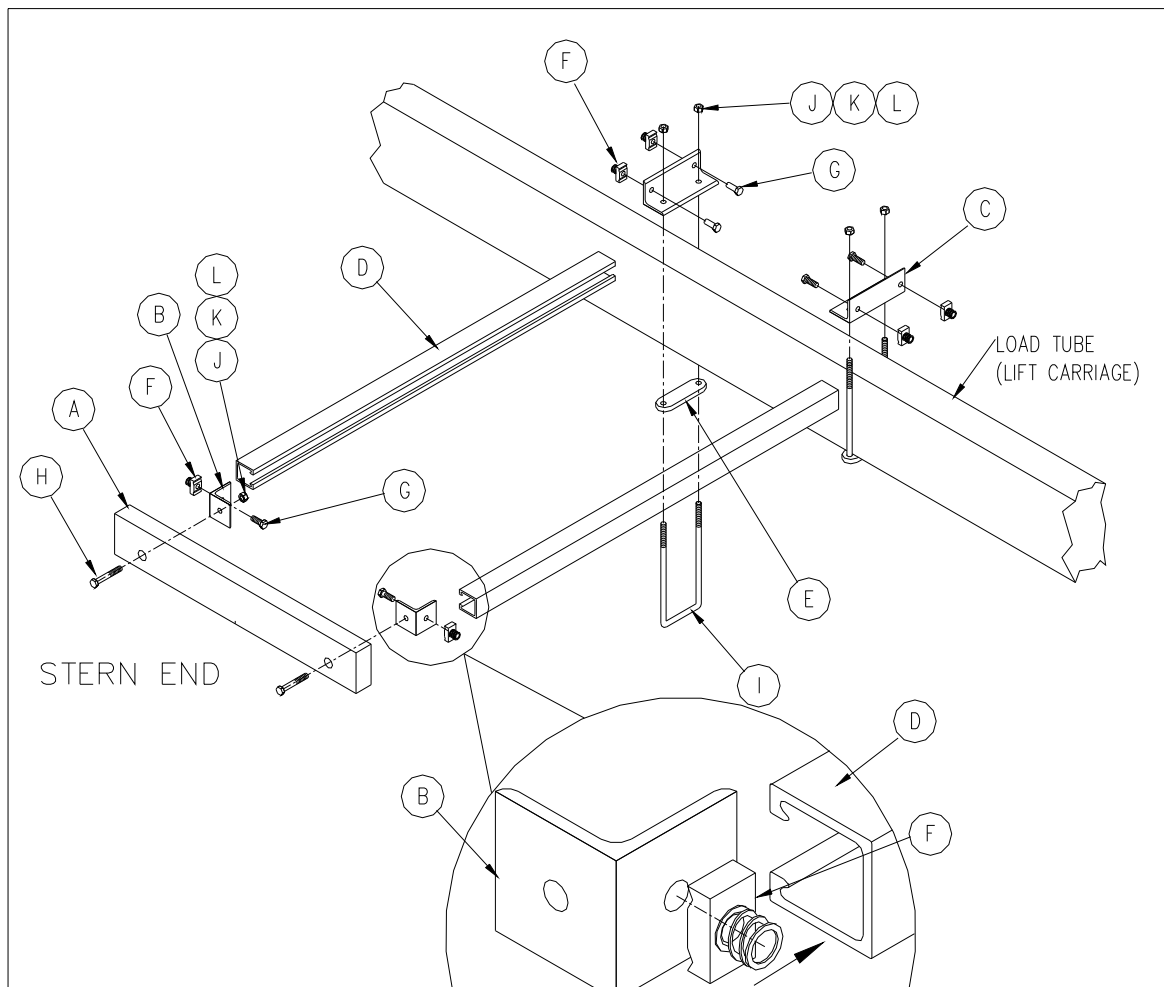
2. Loosely attach both motor stop channel mounting angles (C) to the rear lifting carriage load tube using one square bend u-bolt (I), and two flat washers (J), two lock washers (K), and two hex nuts (L), for each mounting angle. The vertical leg should face the outside of lift.
3. Slide three spring nuts (F) into each aluminum channel. Insert hex head cap screws (G) through channel mounting angle holes and bumper mounting angle, then thread into spring nuts. Do not tighten.
4. Repeat step three for other side of motor stop.

2.4 ADJUSTING MOTOR STOP

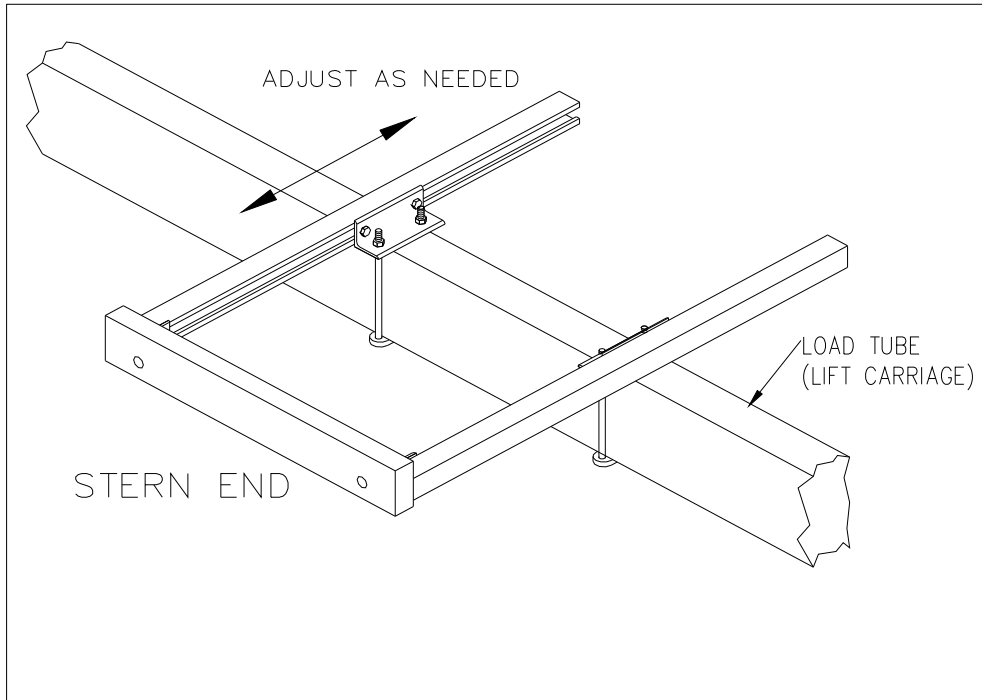
1. Determine location of motor stop by measuring distance between motor and side of boat.
2. Use this information to locate motor stop from side to side on lift.
3. Slide motor stop bumper in closer, or further away, from lifting carriage as needed to maintain boats balance point on lift.

NOTE: BOATS WEIGHT MUST REMAIN CENTERED ON BOAT LIFT AT ALL TIMES.

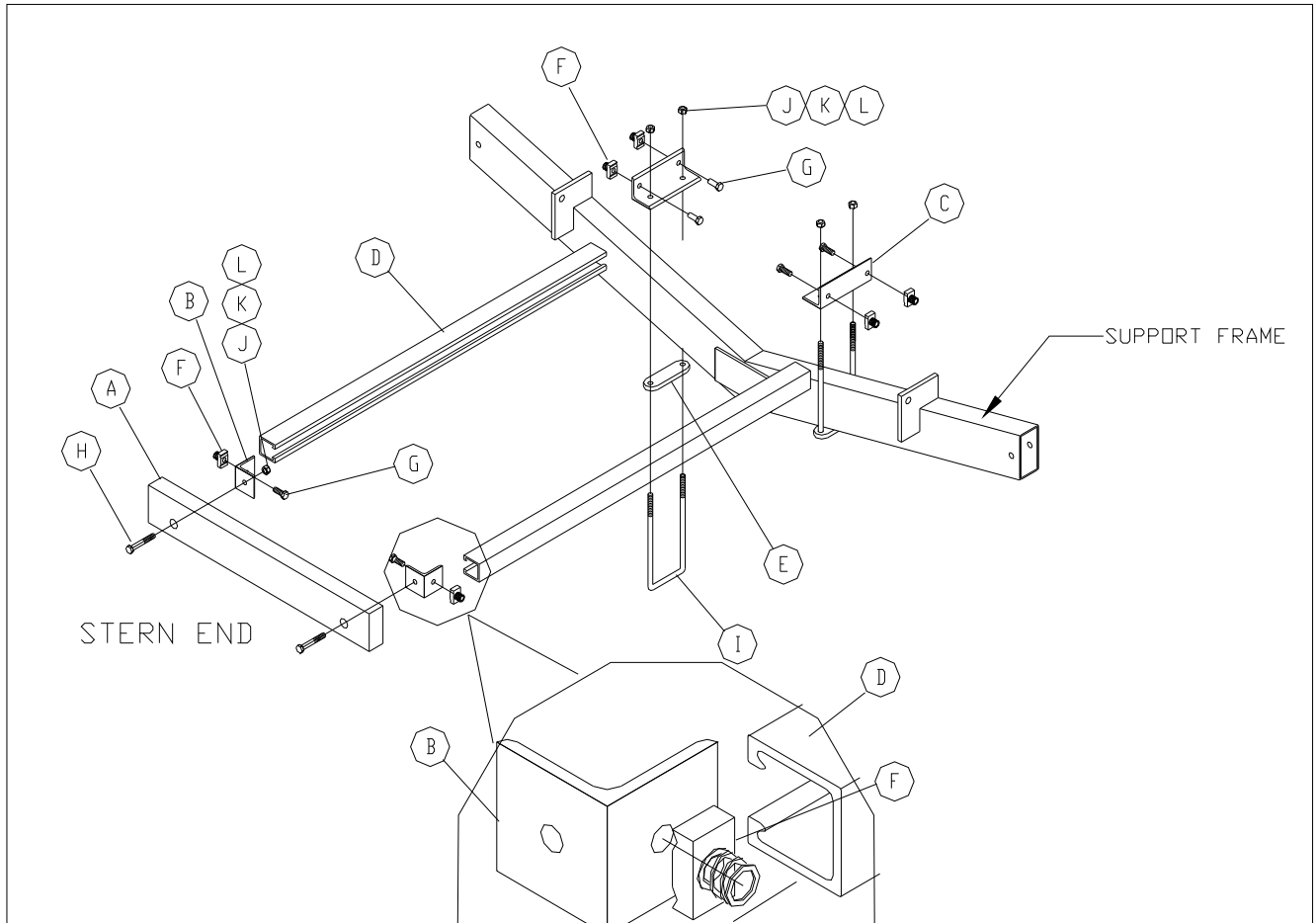
4. Once motor stop is properly positioned, securely tighten all fasteners.



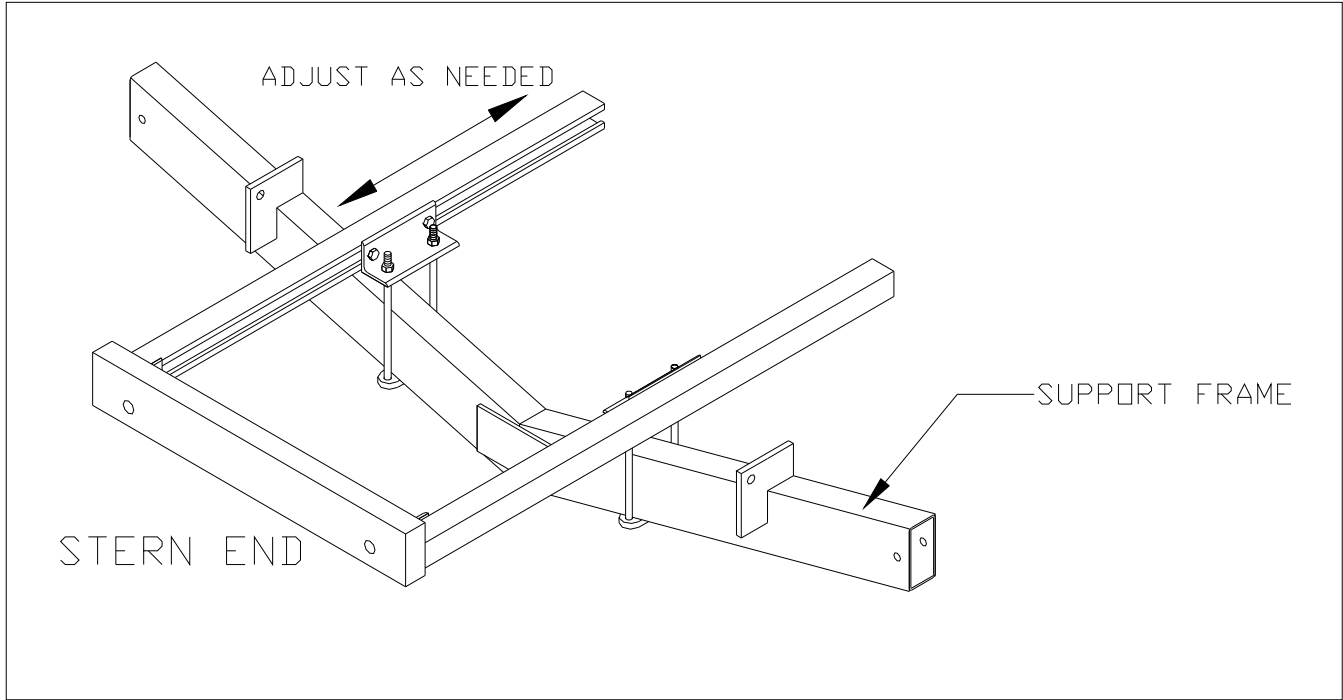
**Motor Stop Assembly VL Lift
Figure 2-1**



Motor Stop Adjustment VL lift
Figure 2-2



Motor Stop Assembly HL3-9K (new style) Lift
Figure 2-3



Motor Stop Adjustment HL3-9K (new style) Lift
Figure 2-4

3 INSPECTION AND MAINTENANCE

3.1 GENERAL MAINTENANCE RULES

1. Do not allow persons other than authorized service personnel to repair this equipment.
2. Inspect bumpers regularly for deterioration. Replace them immediately if they are worn.
3. Do not weld or otherwise modify the lift. Such alterations may weaken the structural integrity of the lift and invalidate your warranty.
4. Completely lower the lift before performing any type of maintenance or repair.



WARNING:

NEVER ALLOW ANYBODY TO WORK IN OR ON THE BOAT WHEN IT IS SUSPENDED ABOVE THE WATER ON THE LIFT. IF THE HANDWHEEL ON THE WINCH SHOULD START FREEWHEELING, DEATH OR SERIOUS INJURY COULD RESULT.

IF FREEWHEELING STARTS, NEVER TRY TO STOP IT. ALTHOUGH A SPIN DOWN OR “FREEWHEELING” CAN CAUSE LIFT OR BOAT DAMAGE, TRYING TO STOP FREEWHEELING CAN CAUSE SERIOUS PERSONAL INJURY.

3.2 ANNUAL INSPECTION

At least once a year, the lift must be thoroughly inspected using the following procedure.



WARNING:

DO NOT ALLOW ANYBODY TO USE THE LIFT UNTIL THIS MAINTENANCE IS COMPLETED.

1. Tighten all bolts.
2. Check all carpeted wood bumpers and wood bunks for any damage, deterioration, or excessive wear. If any is found, replace them immediately.
3. Check frame thoroughly for defects.

3.3 STORAGE PROCEDURE

1. Position boat on platform so the lower unit of the motor is against the motor stop.
2. A boat that has water in it from a rain storm could exceed the recommended weight capacity for the lift. Just 1 gallon of water weighs over 8 pounds. Be sure to remove the plug while the boat is up on the lift.

NOTE: Make sure you replace the plug prior to launching your boat.

3. Protect your lift as far as possible from damage caused by environmental factors such as airborne fallout, chemicals, tree sap, and weather hazards.
4. Never use the lift to hang or store any auxiliary equipment such as boating hardware.
5. Do not allow anyone to swim or play near the lift at any time.
6. Padlock the handwheel to the post and disconnect the power to any electric motor when your boat lift is unattended. Never assume you will find the lift in the same condition that you left it.

4 PARTS LISTS



WARNING:

FAILURE TO APPLY A SUITABLE LUBRICANT TO THE MATING SURFACES OF STAINLESS STEEL THREADED FASTENERS MAY CAUSE GALLING AND/OR SEIZING OF ASSEMBLY.

4.1 3672550 MOTOR STOP—2FT, VL1.6-4K, HVL4K & HL3-9K (new style) Lifts CARTON OF PARTS

| Reference | Part Number | Quantity | Description |
|-----------|-------------|----------|---|
| A | 3608056 | 1 | CARPETED WOOD BUMPER 2FT |
| B | 3608053 | 2 | BUMPER MOUNTING ANGLE |
| C | 3608054 | 2 | CHANNEL MOUNTING ANGLE 2" |
| D | 3685301 | 2 | MOTOR STOP CHANNEL 2FT |
| E | 3603835 | 2 | 2-HOLE PLATE 2" |
| | 3605555 | 1 | MOTOR STOP BAG OF BOLTS (see Section 4.8) |

4.2 3672155 MOTOR STOP—3FT, VL 1.6-4K, HVL4K & HL3-9K (new style) Lifts CARTON OF PARTS

| Reference | Part Number | Quantity | Description |
|-----------|-------------|----------|---|
| A | 3608056 | 1 | CARPETED WOOD BUMPER 2FT |
| B | 3608053 | 2 | BUMPER MOUNTING ANGLE |
| C | 3608054 | 2 | CHANNEL MOUNTING ANGLE 2" |
| D | 3685302 | 2 | MOTOR STOP CHANNEL 3FT |
| E | 3603835 | 2 | 2-HOLE PLATE 2" |
| | | 1 | MOTOR STOP BAG OF BOLTS (see Section 4.8) |

4.3 3605940 MOTOR STOP—2FT, HVL/VL5K Lifts CARTON OF PARTS

| Reference | Part Number | Quantity | Description |
|-----------|-------------|----------|---|
| A | 3608056 | 1 | CARPETED WOOD BUMPER 2FT |
| B | 3608053 | 2 | BUMPER MOUNTING ANGLE |
| C | 3608120 | 2 | CHANNEL MOUNTING ANGLE 3" |
| D | 3685301 | 2 | MOTOR STOP CHANNEL 2FT |
| E | 3606921 | 2 | 2-HOLE PLATE 3" |
| | 3605510 | 1 | MOTOR STOP BAG OF BOLTS (see Section 4.9) |

4.4 3694001 MOTOR STOP—3FT, HVL/VL 5K Lifts CARTON OF PARTS

| Reference | Part Number | Quantity | Description |
|-----------|-------------|----------|---|
| A | 3608056 | 1 | CARPETED WOOD BUMPER 2FT |
| B | 3608053 | 2 | BUMPER MOUNTING ANGLE |
| C | 3608120 | 2 | CHANNEL MOUNTING ANGLE 3" |
| D | 3685302 | 2 | MOTOR STOP CHANNEL 3FT |
| E | 3606921 | 2 | 2-HOLE PLATE 3" |
| | 3605510 | 1 | MOTOR STOP BAG OF BOLTS (see Section 4.9) |

4.5 3694002 MOTOR STOP—2FT, VL6-7K & HVL7K Lifts CARTON OF PARTS

| Reference | Part Number | Quantity | Description |
|-----------|-------------|----------|--|
| A | 3608056 | 1 | CARPETED WOOD BUMPER 2FT |
| B | 3608053 | 2 | BUMPER MOUNTING ANGLE |
| C | 3608054 | 2 | CHANNEL MOUNTING ANGLE 2" |
| D | 3685301 | 2 | MOTOR STOP CHANNEL 2FT |
| E | 3603835 | 2 | 2-HOLE PLATE 2" |
| | 3605556 | 1 | MOTOR STOP BAG OF BOLTS (see Section 4.10) |

4.6 3694003 MOTOR STOP—3FT, VL6-7K & HVL7K Lifts CARTON OF PARTS

| Reference | Part Number | Quantity | Description |
|-----------|-------------|----------|--|
| A | 3608056 | 1 | CARPETED WOOD BUMPER 2FT |
| B | 3608053 | 2 | BUMPER MOUNTING ANGLE |
| C | 3608054 | 2 | CHANNEL MOUNTING ANGLE 2" |
| D | 3685302 | 2 | MOTOR STOP CHANNEL 3FT |
| E | 3603835 | 2 | 2-HOLE PLATE 2" |
| | 3605556 | 1 | MOTOR STOP BAG OF BOLTS (see Section 4.10) |

4.7 3610233 MOTOR STOP—3FT, VL10K Lifts CARTON OF PARTS

| Reference | Part Number | Quantity | Description |
|-----------|-------------|----------|--|
| A | 3608056 | 1 | CARPETED WOOD BUMPER 2FT |
| B | 3608053 | 2 | BUMPER MOUNTING ANGLE |
| C | 3608120 | 2 | CHANNEL MOUNTING ANGLE 3" |
| D | 3685302 | 2 | MOTOR STOP CHANNEL 3FT |
| E | 3606921 | 2 | 2-HOLE PLATE 3" |
| | 3610299 | 1 | MOTOR STOP BAG OF BOLTS (see Section 4.11) |

4.8 3605555 MOTOR STOP BAG OF BOLTS VL1.6-4K, HVL4K & HL3-9K

| Reference | Part Number | Quantity | Description |
|-----------|-------------|----------|---|
| F | 5805898 | 6 | 3/8 SPRING NUT |
| G | 5896247 | 6 | 3/8 X 1 HEX HEAD CAP SCREW |
| H | 5896323 | 2 | 3/8 X 2-1/2 CARRIAGE BOLT |
| I | 5898100 | 2 | 3/8 X 2-1/8 X 5-5/8 SQUARE BEND U-BOLT (1.6-4K) |
| J | 5896406 | 6 | 3/8 SAE FLAT WASHER |
| K | 5806243 | 6 | 3/8 SPLIT-LOCK WASHER |
| L | 5896377 | 6 | 3/8 HEX NUT |

4.9 3605510 MOTOR STOP BAG OF BOLTS HVL/VL5K Lift

| Reference | Part Number | Quantity | Description |
|-----------|-------------|----------|---|
| F | 5805898 | 6 | 3/8 SPRING NUT |
| G | 5896247 | 6 | 3/8 X 1 HEX HEAD CAP SCREW |
| H | 5896323 | 2 | 3/8 X 2-1/2 CARRIAGE BOLT |
| I | 5895900 | 2 | 3/8 X 3-1/8 X 6-5/8 SQUARE BEND U-BOLT (5K) |
| J | 5896406 | 6 | 3/8 SAE FLAT WASHER |
| K | 5806243 | 6 | 3/8 SPLIT-LOCK WASHER |
| L | 5896377 | 6 | 3/8 HEX NUT |

4.10 3605556 MOTOR STOP BAG OF BOLTS VL6-7K & HVL7K Lift

| Reference | Part Number | Quantity | Description |
|------------------|--------------------|-----------------|---|
| F | 5805898 | 6 | 3/8 SPRING NUT |
| G | 5896247 | 6 | 3/8 X 1 HEX HEAD CAP SCREW |
| H | 5896323 | 2 | 3/8 X 2-1/2 CARRIAGE BOLT |
| I | 5895905 | 2 | 3/8 X 2-1/8 X 8-5/8 SQUARE BEND U-BOLT (6-7K) |
| J | 5896406 | 6 | 3/8 SAE FLAT WASHER |
| K | 5806243 | 6 | 3/8 SPLIT-LOCK WASHER |
| L | 5896377 | 6 | 3/8 HEX NUT |

4.11 3610299 MOTOR STOP BAG OF BOLTS VL10K Lift

| Reference | Part Number | Quantity | Description |
|------------------|--------------------|-----------------|--|
| F | 5805898 | 6 | 3/8 SPRING NUT |
| G | 5896247 | 6 | 3/8 X 1 HEX HEAD CAP SCREW |
| H | 5896323 | 2 | 3/8 X 2-1/2 CARRIAGE BOLT |
| I | 5895901 | 2 | 3/8 X 3-1/8 X 8-5/8 SQUARE BEND U-BOLT |
| J | 5896406 | 6 | 3/8 SAE FLAT WASHER |
| K | 5806243 | 6 | 3/8 SPLIT-LOCK WASHER |
| L | 5896377 | 6 | 3/8 HEX NUT |

TWO YEAR LIMITED WARRANTY

Reimann & Georger Corporation Marine Products

This product is warranted by RGC® Marine Products to the original purchaser to be free from defects in material and workmanship under normal use for a period of two years from the date of purchase.

During the warranty period, and upon proof of purchase, the product will be repaired or replaced (with the same or similar model) at our option, without charge for either parts or labor when serviced at RGC® Marine Products.

Upon completion of repair, the unit will be returned to the customer freight prepaid. The warranty will not apply to this product if it has been misused, abused, or altered.

NEITHER THIS WARRANTY OR ANY OTHER WARRANTY, EXPRESS OR IMPLIED, INCLUDING IMPLIED WARRANTIES OF MERCHANTABILITY, SHALL EXTEND BEYOND THE WARRANTY PERIOD. NO RESPONSIBILITY IS ASSUMED FOR ANY INCIDENTAL OR CONSEQUENTIAL DAMAGES. SOME STATES DO NOT ALLOW EXCLUSION OR LIMITATION OF INCIDENTAL OR CONSEQUENTIAL DAMAGES, SO THE ABOVE LIMITATIONS OR EXCLUSIONS MAY NOT APPLY TO YOU.

This warranty gives you specific legal rights, and you may also have other rights which vary from state to state.