

LIST OF FIGURES

FIGURE	DESCRIPTION	PAGE
2.1	Typical Lift Product Nameplate	4
3.1	Mounting Power Drive	6
3.2	Mounting Remote Control.....	7
3.3	Mounting Manual Switch	8
3.4	Standard RC Power Drive Wire Rope Reeving for AR4K/BR4K Railway	9
3.5	Standard RC Power Drive Wire Rope Reeving for AR6K Railway	10
3.6	HD RC Power Drive Rope Reeving for AR4K/BR4K Railway	11
3.7	HD RC Power Drive Rope Reeving for AR6K Railway.....	12
3.8	AR Standard Beacher Railway With Remote Control Power Drive	14
3.9	AR HD Beacher Railway With Remote Control Power Drive.....	15
5.1	Wire Rope Components	19

1.5 OPERATING SAFETY

1.5.1 GENERAL SAFETY

1. Before allowing anyone to operate the power drive, be sure they fully understand the proper operating procedure and the use of all controls and connections for both the power drive and the railway.
2. Completely remove any user or dealer installed locking devices before operating the power drive.
3. Do not operate the power drive and the railway under the influence of drugs, alcohol, or medication.
4. Do not exceed the rated maximum capacity of the railway. This can damage the power drive, railway and/or boat with resulting serious personal injury.
5. Never allow anyone into the boat when supported on the railway.
6. Never operate the power drive without the belt guard installed. Keep fingers and clothing clear of all moving parts of the railway and power drive.
7. Do not attempt to make any adjustments on the railway or power drive during operation.
8. Disconnect and lock out the power source when not using the power drive to prevent unauthorized use.
9. Never use the power drive or any part of the railway to hang or store any auxiliary equipment such as boating hardware.

1.5.2 SAFETY WHEN RAISING BOAT

1. The power drive wire rope must reeve from the top of the drum when pulling in the carriage.
2. Do not try to pull the boat close to the power drive. Keep it a safe distance away from the power drive.



WARNING:

THE POWER DRIVE BELT GUARD MUST BE INSTALLED BEFORE OPERATING. ALSO, ENSURE WIRE ROPE REEVES FROM TOP OF POWER DRIVE DRUM WHEN OPERATING

1.5.3 SAFETY WHEN LOWERING BOAT

1. The power drive wire rope must reeve from the top of the drum when lowering the carriage.



WARNING:

LOWER THE CARRIAGE JUST ENOUGH TO FLOAT THE BOAT. AVOID EXCESSIVE WIRE ROPE SLACK TO PREVENT TANGLING OF WIRE ROPE ON POWER DRIVE.

2.4 NAMEPLATE AND SERIAL NUMBER TAG

It is important to identify your Railway Power Drive completely and accurately whenever ordering spare parts or requesting assistance in service. The Power Drive has a product nameplate located on the mounting frame. The nameplate shows the model and serial numbers and capacity rating. The nameplate should appear as the sample nameplate shown in Figure 2-1. Record the serial number for future reference.

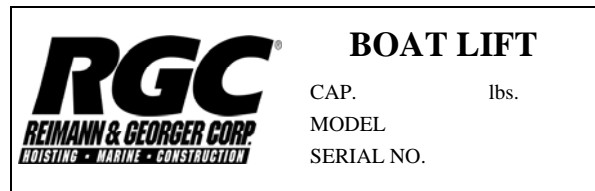


Figure 2-1.
Typical Product Nameplate

MODEL RAILWAY RC or POWER DRIVE

SERIAL NUMBER _____

MAX. LINE CAPACITY RATING _____

2.5 OPTIONAL EQUIPMENT

The following options are available which enable you to customize your Railway and Power Drive for your particular operation. Installation instructions are provided as part of each option kit.

1. **#1 Track Supports** (adj. range 18-1/2" – 27-1/2" ground to top of track) - used for railway track not supported by the ground or where track must be raised for proper operation.
2. **#2 Track Supports** (adj. range 26-1/2" – 35-1/2") - see above
3. **Pontoon Kit** – deck style or cradle design supports pontoon boat under either the deck, or under pontoon.
4. **Extra 10 Ft. Track Sections** – for installations requiring more than the standard 40 Ft. of track. Longer wire rope will be required.
5. **Curved 10 Ft. Track Sections** – required for going over seawalls and whenever there is a high degree of change between track sections
6. **Remote Control Conversion 110VAC** – converts switch operated control to remote control with a range of approximately 100 Ft.
7. **Push / Pull Power Drive** – allows rail system to be used in very shallow incline areas to pull carriage to water.
8. **Door Track Splice** – 2 Ft track section allows boathouse overhead door to fully close.

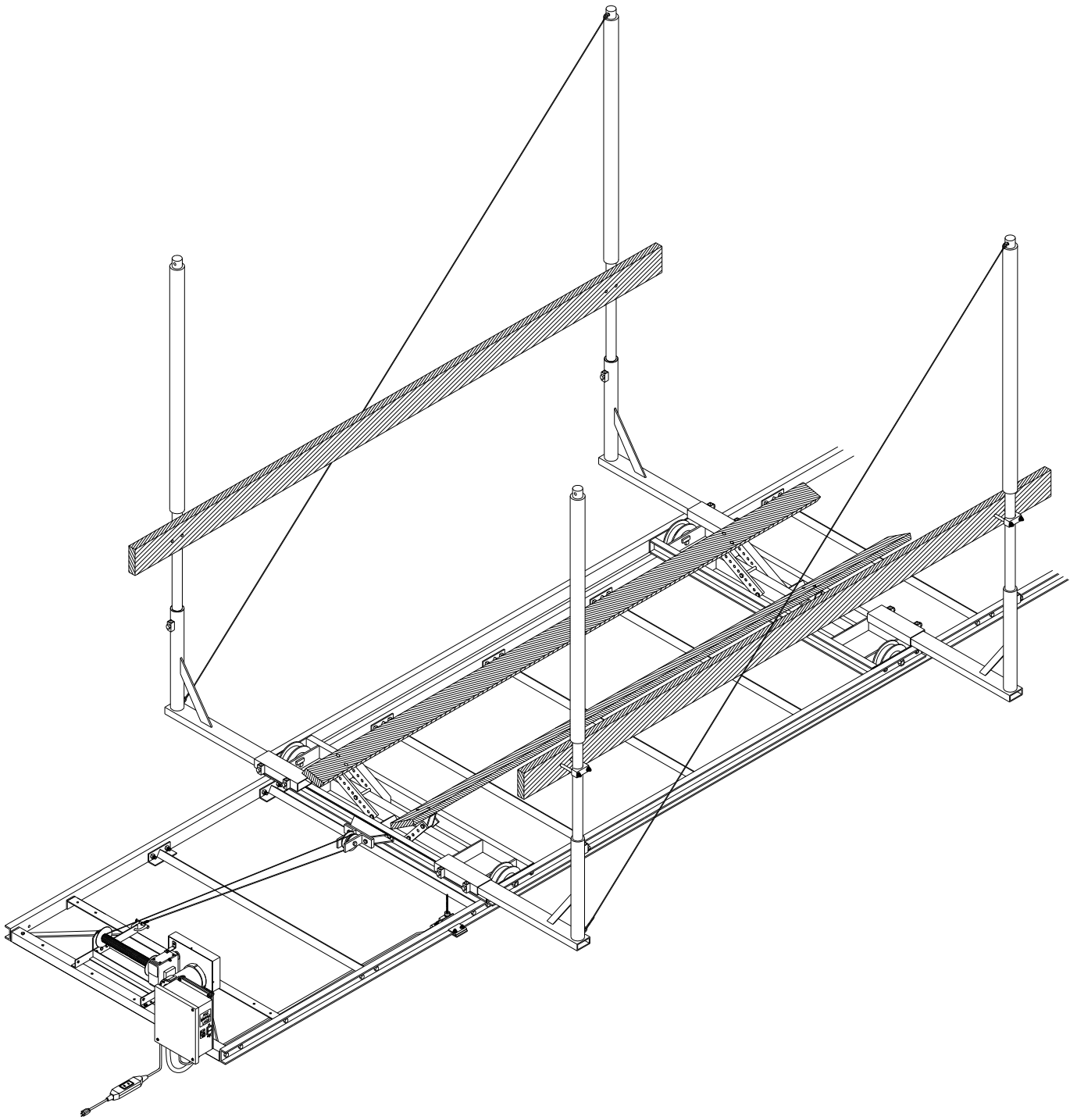


Figure 3-9
AR Heavy Duty Beacher Railway With Remote Control Power Drive

